

# Lesson #1

1. A phrase is a group of words that acts as a single part of speech.

**Example:** Today I woke up, took a shower, and ate breakfast.  
The underlined phrases act as verbs.

Use commas to separate three phrases in the sentence below.

I flew into JFK International Airport rode a train into Manhattan took the subway to Brooklyn and arrived at my aunt's house.

2. Use commas to separate coordinate adjectives. These are adjectives that modify a noun in the same way and whose order can be reversed without changing the meaning.

**Example:** the bleak, depressing novel the depressing, bleak novel  
Note that either order makes sense.

Place a comma where it is needed.

The tall broad tree fell under the blade of the old lumberjack.



3. Match each sentence type to its description.

\_\_\_\_\_ simple

A) two or more independent clauses

\_\_\_\_\_ compound

B) one independent clause

\_\_\_\_\_ complex

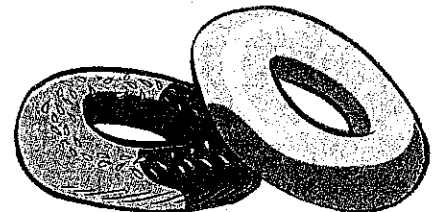
C) at least two independent clauses and at least one subordinate clause

\_\_\_\_\_ compound-complex

D) one independent clause and at least one subordinate clause

4. Add commas to clarify the compound subject in the following simple sentence.

Bagels muffins strawberry jam and cream cheese were neatly arrayed on the breakfast table.





# Lesson #2

1. Use to what you know about Latin roots. Which of the following involves breaking the law?

creed    inscription    cartography    perjury

2. Correctly write any words that should be capitalized.

Our governor and president Clinton went to Georgetown university together.

---

3. The poetry excerpt below contains a simile. What two things are being compared?

From cocoon forth a butterfly  
As lady from her door  
Emerged — a summer afternoon —  
Repairing everywhere —

—Emily Dickinson



4. A clause is a group of words with both a subject and a verb.

Which of these is a clause?

\_\_\_ if you can dance    \_\_\_ on my honor    \_\_\_ very quickly

5. Use context clues to determine the meaning of the underlined word.

The dulcet tones of the piano reverberated throughout the parlor.

responsible    left    sweet    meager



6. Choose the word that best completes the analogy.

brush : watercolor painting :: camera : \_\_\_\_\_

color      photograph      light      flash

7. The sentence below has a dangling modifier. Underline the dangling modifier. Rewrite the sentence so that the meaning is clear.

Reading my new book, it was so exciting I could not put it down.



8. Evaluate each statement below. Write F for *fact*, O for *opinion*, or RJ for *reasoned judgment*.

\_\_\_\_\_ There are compelling reasons for requiring motorcycle riders to wear helmets.

\_\_\_\_\_ In many states, it is illegal to ride a motorcycle without wearing a helmet.

\_\_\_\_\_ Motorcyclists should be the ones to decide whether they wear headgear.

9. Underline the prepositions in the following sentence.

At the house on the corner, if you look under the porch, you will find an old vase inside a box.



10. Consult a dictionary to determine which word or phrase refers to a type of turtle.

diadem      foie gras      blitzkrieg      terrapin

What part of speech is the word? \_\_\_\_\_

# Lesson #3

1. Choose the word that best completes the analogy.

automobile : van :: pet : \_\_\_\_\_

dog      animal      favorite      miniature

2. Use context clues to determine the meaning of the underlined word.

The large crop this season helped to mitigate hunger in the region.

worsen      ease      personify      develop



3. Underline the coordinating conjunction.

We have chicken, and we have beef, although many people say our vegetarian options are the best in town.

4. The sentence below has a misplaced modifier. Underline the misplaced modifier. Rewrite the sentence so that the meaning is clear.

A little girl was walking her dog in bedroom slippers.




---



---

5. Choose the word that has the softest connotation.

Anita and I are in the middle of an unfortunate \_\_\_\_\_.

fight      disagreement      squabble      clash

6. Identify the sentence parts. One part of speech listed below is not present in the sentence.

The storm passed over that town.

A            B            C            D            E

- |       |                         |       |                                      |
|-------|-------------------------|-------|--------------------------------------|
| _____ | object of a preposition | _____ | reflexive pronoun                    |
| _____ | complete subject        | _____ | simple predicate                     |
| _____ | preposition             | _____ | demonstrative acting as an adjective |

7. There are two sets of adjectives in the sentence below. Only the coordinate adjectives should be separated by a comma. Add a comma between the coordinate adjectives.

The two stylish witches took a nice long walk.



8. What is the structure of the sentence written below?

simple      compound      complex

Now that the new water park is open, we can have my birthday party there!

9. Use what you know about prefixes and roots to match these words with their meanings.

- |       |            |    |                            |
|-------|------------|----|----------------------------|
| _____ | manipulate | A) | to handle skillfully       |
| _____ | manner     | B) | someone who manages things |
| _____ | manager    | C) | a way of handling or doing |

10. Consult a dictionary to determine which word refers to “a policy of government openness utilized in the former Soviet Union.”

perestroika      babushka      balaclava      matryoshka

What part of speech is the word? \_\_\_\_\_

## Lesson #4

1. Add a colon and three commas.

Mrs. Parks remembered everything flashlights  
snacks water and even binoculars.

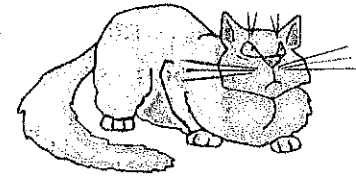


2. The sentence below has inverted order.  
Underline the complete subject; circle the verb.

Within every lie is a kernel of truth.

3. Underline the prepositional phrases in the sentence below. Circle the prepositions. Place boxes around their objects.

A cat from the neighborhood was found miles  
away, underneath an overturned boat.



4. Read the sentence. Label it simple, compound, complex, or compound-complex.

Whenever Susan is in charge, we have to clean our  
rooms, and we aren't allowed to use the telephone.

5. **A fact can be proven. An opinion cannot.** Place a check next to the opinion.

\_\_\_\_\_ There are apple orchards, berry bushes, and strawberry fields on the property.

\_\_\_\_\_ This variety makes our farm one of the best places for testing new farming techniques.



6. There are two kinds of clauses: dependent and independent. Which clause can stand alone as a complete sentence?

dependent

independent

7. Use what you know about prefixes and roots to match these words with their meanings.

A) subcutaneous      B) submerge      C) subzero

\_\_\_\_\_ beneath the skin

\_\_\_\_\_ below zero

\_\_\_\_\_ to put below



8. Explain the personification in the sentence below.

The lawn mower resisted, coughing and sputtering but finally rose to the task.

---



---

9. Which word has the most negative connotation?

cheap

thrifty

frugal

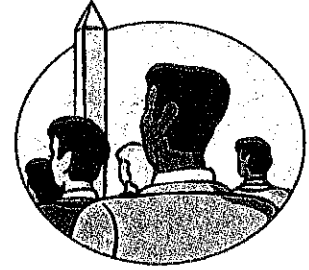
10. A compound noun is not separated by a comma. Cross out the comma that is not needed.

**Examples:** fruit tree, copper penny

The long, tedious journey began when we exited through the rusty, iron gate.



## Lesson #5



1. Locate any capitalization errors in the sentence.  
Write the corrected words on the line below.

Mom and dad took us on a trip to the Washington monument.

---

2. Use what you know about word parts to choose the word that means “present in all places and at all times.”

omniscient    presently    omnipresent    presentation

3. Use context clues to determine the meaning of the underlined word.

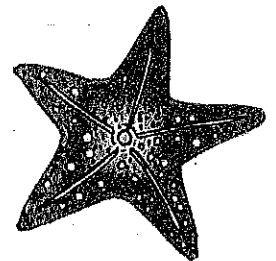
Come outside! You've been cloistered up in that bedroom all day.

robbed    confined    splashed    cluttered

4. Identify each statement as either a fact (F) or an opinion (O).

\_\_\_\_\_ Many of the animals that live on the ocean floor are echinoderms.

\_\_\_\_\_ Some echinoderms are very strange looking.



5. **An adverb clause is a subordinate clause that modifies a verb, adjective, or another adverb. An adverb clause tells *when*, *where*, *why*, or *how*.**

**Example:** We ran as though we were being chased by lions.

Underline the adverb clause.

As soon as she gets home from the store, Mom will make the cupcakes.

What does the adverb clause modify? \_\_\_\_\_

6. Consult a dictionary to determine which word means “to surround or lay siege to.”

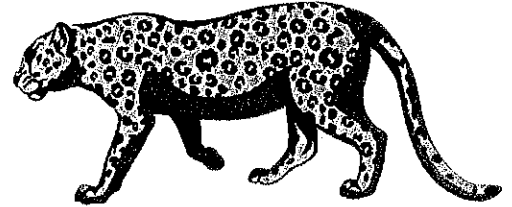
marginalize    imprecate    beleaguer    bludgeon

What part of speech is the word? \_\_\_\_\_

7. Choose the word that best completes the analogy.

Texas : state :: jaguar : \_\_\_\_\_

cat    football    fast    zoo



8. Use a hyphen to attach a prefix to a proper noun or proper adjective.

**Examples:** mid-America, post-Vatican II, anti-Semitic

Add hyphens to these words.

post Civil War    pre Columbian    mid December

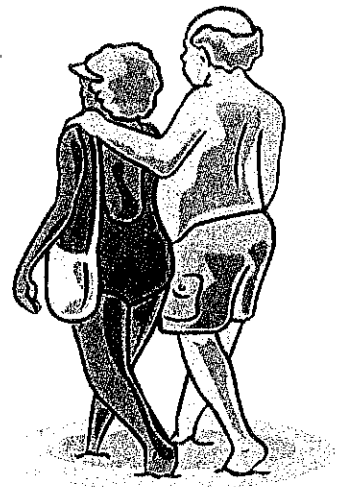
9. The following sentence contains either a simile or a metaphor. Which is it? Underline the two things being compared.

In the auditorium, people were packed into rows like kernels on a freshly picked ear of corn.

simile    metaphor

10. The sentence below has a dangling modifier. Underline the dangling modifier. Rewrite the sentence so that the meaning is clear.

Walking along the beach, the sunset was a spectacular burst of brilliant color.




---



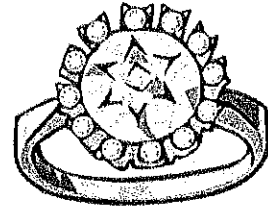
---

# Lesson #6

1. An intensive pronoun is used for emphasis. A reflexive pronoun is essential — it cannot be removed without changing the meaning of the sentence.

**Intensive Example:** I painted my fingernails myself.

**Reflexive Example:** I cut myself while chopping fennel.



Which sentence uses an intensive pronoun?

- A) She bought herself an extravagant gift.
- B) She does not really care for action movies herself.

2. Use context clues to determine the meaning of the underlined word.

Since the James family moved out of the house on the corner, the property has become derelict and overgrown.

well-maintained

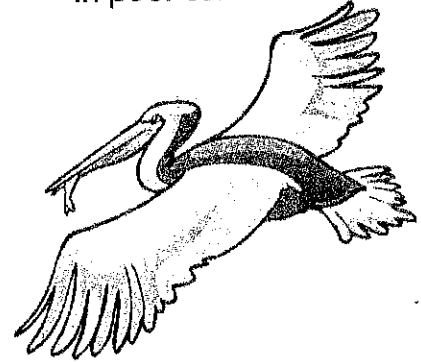
elegant

disrupted

in poor condition

3. In the sentence below, underline the complete subject, double underline the complete predicate, and circle the simple predicate.

The pelicans, along with a flock of seagulls, barreled headlong into the sea at intervals.



4. Place a comma between the coordinate adjectives.

The man's ugly brown suit clashed with the sad beautiful music he played.

5. Underline the subordinate clause in the sentence below.

The album is very good, although some tracks should have been left off.

What type of sentence is it?

simple      compound      complex



6. The sentence below has a misplaced modifier. Underline the misplaced modifier. Rewrite the sentence so that the meaning is clear.

Maryanne watched the chipmunks, watering the garden.




---

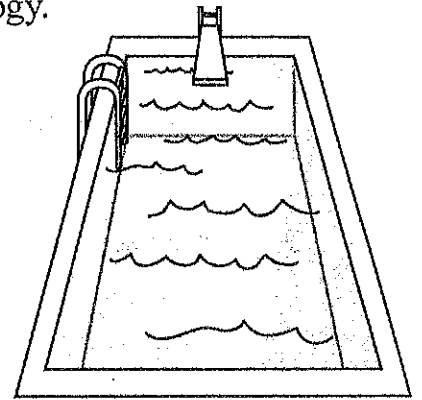


---

7. Choose the word pair that best completes the analogy.

water : swimming pool :: \_\_\_\_\_

- A) sand : sandbox
- B) playground : fun
- C) lifeguard : swimmer
- D) toys : children



8. Consult a dictionary to determine which word means "a pen name or pseudonym."

cognate      nom de plume      viscount      bivouac

What part of speech is the word? \_\_\_\_\_

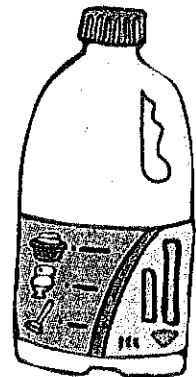
9. Choose the item that has the softer connotation.

The manager had a (difference of opinion / dispute) with the supplier about the date of shipment.

10. Is the underlined part of the sentence a phrase or a clause?

Beneath the sink, you will find bleach and ammonia. Take care not to mix them.

phrase                  clause



# Lesson #7

1. Cross out an error in each sentence; then write the correction above it.

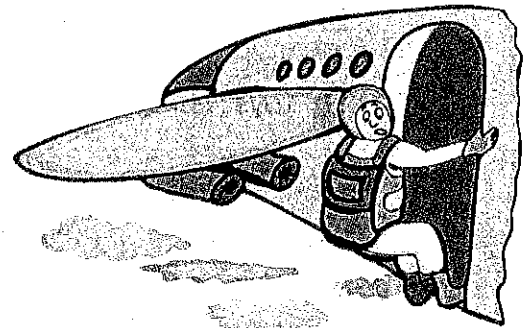
Gazpacho is a type of soup that's is served cold. The soup was Spanish in origin and is made with vegetables. Be sure to ad plenty of spices, oil, vinegar, and bread crumbs to get the proper consistency.

2. Use what you know about prefixes and roots to match these words with their meanings.

- |                     |                                   |
|---------------------|-----------------------------------|
| _____ polychromatic | A) new word                       |
| _____ neologism     | B) beneath the top layer of earth |
| _____ subsoil       | C) many colored                   |

3. Which sentence uses a reflexive pronoun?

- A) "I can't bring myself to jump!" cried the would-be skydiver.  
 B) "I should have cooked the meal myself," he told his queasy guests.



4. Explain the personification in the passage below.

The worst of the earthquake was over, but aftershocks rattled the chimes and set the dishware to dancing yet another lively jig.

---



---

5. Cross out the comma that is not needed.

The melting, Swiss cheese tempted the cold, hungry rat.



6. Insert a colon; then, add three commas to separate the prepositional phrases in the following sentence.

I looked all over for my gloves in the car on the counter between the cushions and under the chair.



7. What is the denotation of the word *fresh*?

exciting      with it      new      cool

8. Evaluate each statement below. Write F for *fact*, O for *opinion*, or RJ for *reasoned judgment*.

\_\_\_\_\_ Bermuda's climate is one of the best in the world.

\_\_\_\_\_ Bermuda has an average winter temperature of 68°F.

9. Is the underlined clause subordinate or independent?

Though there are nearly 200 countries in the world, there are only three in North America.

subordinate      independent



10. Read each sentence. Label it S for simple, C for compound, CX for complex, or C-CX for compound-complex.

"Before you criticize someone, you should walk a mile in his shoes.

\_\_\_\_\_

That way, when you criticize him, you are a mile away, and you have his shoes." –Anonymous

\_\_\_\_\_

## Lesson #8

1. Underline the adverb clause.

Mary ran until she felt that her legs would give out.

What word does the adverb clause modify? \_\_\_\_\_

2. Consult a dictionary to determine which word, borrowed from the French language, means “confidence in social behavior.”

aquarelle    avant-garde    amuse bouche    savoir faire

What part of speech is the word? \_\_\_\_\_

3. Use context clues to determine the meaning of the underlined word.

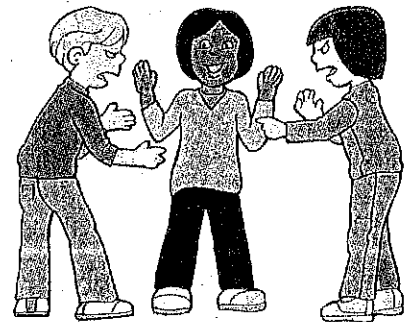
Mandy was completely bored, as there was nothing to read except her little brother's insipid comic books and magazines.

interesting    dull    refreshing    complicated

4. The following sentence contains a simile or metaphor; which is it? Underline the two things being compared.

The boys' reaction to each other was a violent eruption that overwhelmed the peaceful classroom.

simile                      metaphor



5. Locate any capitalization errors in the sentence. Write the corrected words on the line below.

Do you remember how our Grandma always had african violets on the windowsill?

\_\_\_\_\_

6. Choose the word that best completes the analogy.

guitar : instrument :: samba : \_\_\_\_\_

Brazil      dance      jazz      piano



7. The sentence below has a dangling modifier. Underline the dangling modifier. Rewrite the sentence so that the meaning is clear.

Eating candy, the chocolate covered cherries were delicious.

---



---

8. Use what you know about word parts to match each word with its meaning.

A) triumvirate      B) impractical      C) bivariate

\_\_\_\_\_ having two variables      \_\_\_\_\_ governed by three      \_\_\_\_\_ not sensible

9. Evaluate each statement below. Write F for *fact*, O for *opinion*, or RJ for *reasoned judgment*.

- \_\_\_\_\_ Understanding climate change is the single most challenging mission of our time.
- \_\_\_\_\_ Earth's temperature has increased by about one degree over the past one hundred years.



10. Choose the correct pronoun.

The administrator, under (who / whom) the changes were made, takes full responsibility.

# Lesson #9

1. Consult a dictionary to determine which word means “done or created for a particular purpose.”

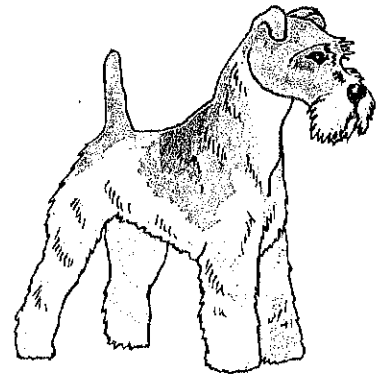
prix fixe    ad hoc    smorgasbord    alchemical

What part of speech is the word?  
 (You only need to list one). \_\_\_\_\_

2. Place a comma correctly in the sentence that has coordinate adjectives.

A terrier has long wiry hair.

An aged balsamic vinegar is generally tastier than a young vinegar.



3. Choose the word that has the softest connotation for this sentence.

Although the small white clusters of flowers are pretty, they have an (unpleasant / abhorrent / obnoxious) smell, so we appreciate them from afar.

4. What type of sentence is used in item 3?

compound    complex    compound-complex

5. Choose the word pair that best completes the analogy.

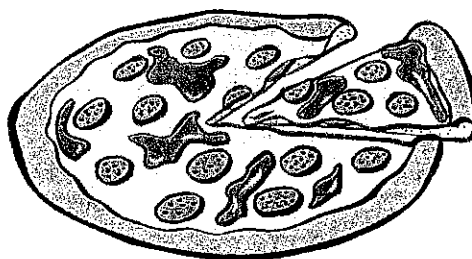
wheel : wagon :: \_\_\_\_\_

night : day

leg : chair

orange : fruit

elated : thrilled



6. The sentence below has a misplaced modifier. Underline the misplaced modifier. Rewrite the sentence so that the meaning is clear.

Because he was chasing a squirrel, Kevin could not get his dog to come inside.

---



---

7. Correctly write any words that should be capitalized.

Lisa asked, "will you join us for dinner, doctor Philips?"

---

8. Underline the subordinating conjunction.

Whenever you are able, I want you to check in with me via text.



9. Correctly rewrite the sentence below.

The president and governor Jordan are meeting to discussed disaster relief for the recent flood.

---



---

10. Use context clues to determine the meaning of the underlined word.

The police knew that a fish was responsible for robbing the bank, but they were unable to apprehend the slippery suspect.

arrest      persuade      exclude      marvel

# Lesson #10

1. Read the sentence. Label it simple, compound, complex, or compound-complex.

Micah is a little bossy, but he's very responsible.

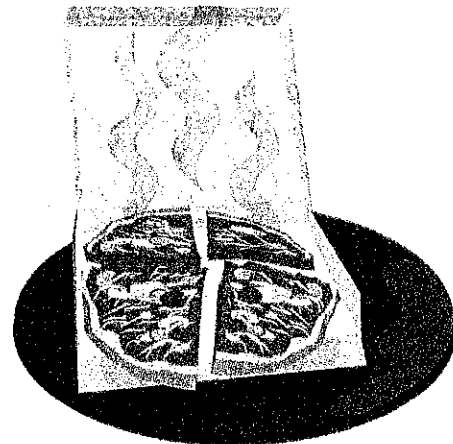
---

2. The following selection contains a simile or metaphor. Which is it? Underline the two things being compared.

The scent of fresh pizza escaped like a magical genie from its container.

simile

metaphor



3. Rewrite the sentence, adding a dash where appropriate.

Don't go overboard with the salt an amateur mistake.

---

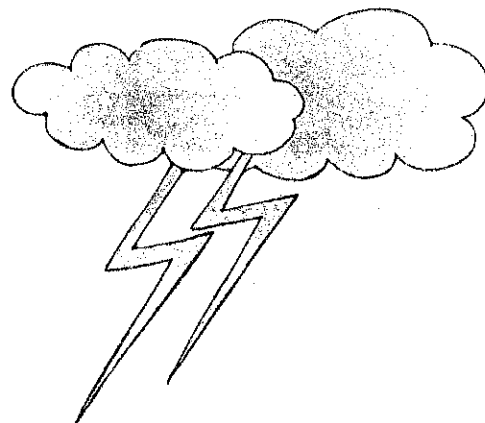
---

4. Underline the word that you think has the softest connotation.

My grandparents' spending habits are very (stingy / frugal).

5. Underline the prepositional phrases in the sentence below. Circle the prepositions. Place boxes around their objects.

Connor hid in the closet until he knew the storm had passed over the house.

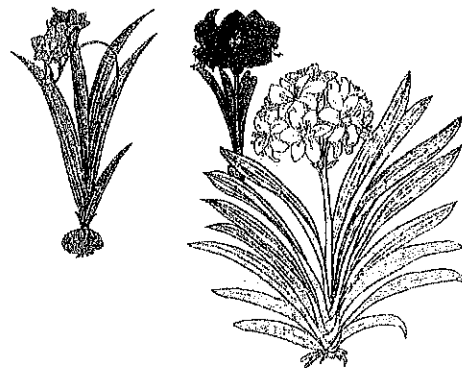


6. Is the underlined clause subordinate (dependent) or independent?

Although it was written in 1956, Miriam Makeba made the song "Pata Pata" a worldwide hit in 1967.

subordinate

independent



7. As it is, the sentence has two grammatical errors. Correctly rewrite the sentence below.

Jenny traveled between the many flowers to find which was the more aromatic.

---



---

8. Place a comma between any coordinate adjectives.

The mean smelly old cat hissed at the crying little girl.

9. The prefix *extra-* means "outside" or "beyond." Match these words with their meanings.

_____ extraordinary	A) outside the walls
_____ extramural	B) beyond ordinary
_____ extracellular	C) outside a cell

10. Evaluate each statement below. Write F for *fact*, O for *opinion*, or RJ for *reasoned judgment*.

\_\_\_\_\_ Bicycling to and from school may be one way to introduce students to a healthy lifestyle.

\_\_\_\_\_ Over a forty year period, the percentage of students bicycling to school has dropped from one in two to approximately one in ten.

